

Wintershall Noordzee B.V.



Case Study: Developing Custom GIS Tools

Challenge

Wintershall Noordzee B.V. (WINZ), based in The Netherlands, is a wholly owned subsidiary of BASF and is part of Germany's largest producer of crude oil and natural gas. WINZ's challenge was to provide fast, intuitive access to their extensive corporate E&P database for their staff, and develop GIS tools that supported specific workflows.

Solution

Exprodat has developed a range of customised GIS tools to provide access to key subsurface and engineering data systems.

Results

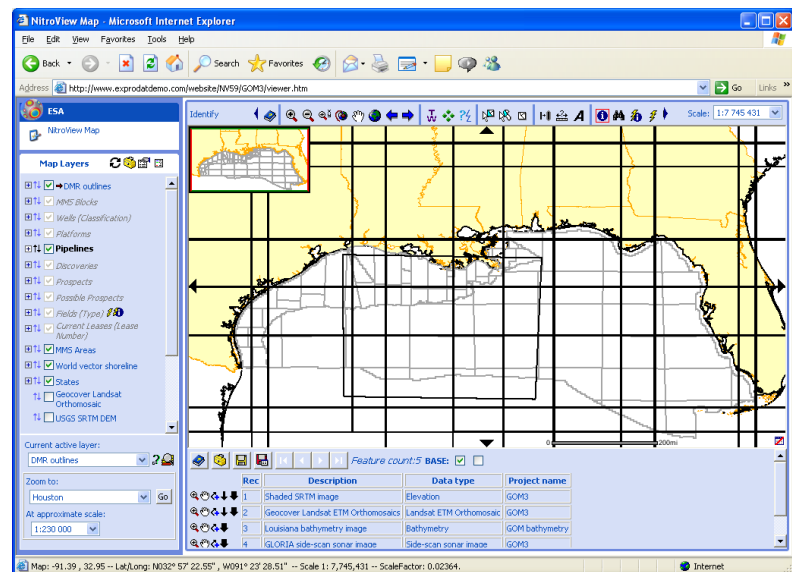
WINZ's GIS system provides rapid access to key subsurface data, allowing the company to react quickly to new business opportunities, and better understand risk and uncertainty. This has helped Wintershall to reach the Exploration and Production target set in 2000 for 2010 two years earlier than expected ⁽¹⁾



(1) See www.wintershall.com

Data access and integration

WINZ has implemented a comprehensive corporate database that includes Exploration, Drilling and Engineering data. The database contains data of known quality and extensive coverage across several key data domains, delivered to users as part of a central data management service, and supported by a set of simple-to-use data access tools, including GIS systems.



Exprodat's services

Exprodat first implemented a web-based GIS system at WINZ in 2004, based on ESRI's ArcIMS and Exprodat's NitroView web GIS products. This system has proven popular with users as a way of integrating and visualising multiple disparate data sources and searching for non-spatial data via links to other back-end applications. The uptake of desktop GIS technology for more analytical purposes has also increasing at WINZ, particularly in the exploration domain. Exprodat provides WINZ with training and support in this area.

Exprodat has also developed a number of specialist GIS tools for WINZ, including a Prospect Inventory reporting application, and a Digital Map Rack tool, providing access to historical interpretation data from current and legacy mapping applications.

Exprodat are working with WINZ to define a strategy for expansion of the use of GIS, further integration with other E&P data systems and expanded technical support.

